



E & A CONSULTING GROUP, INC.

Engineering Answers

10909 Mill Valley Road, Suite 100 • Omaha, NE 68154-3950

P 402.895.4700 • F 402.895.3599

www.eacg.com

Dear Homeowner:

The SID has contracted concrete work to be done on the streets in your SID. A contractor will be on site to do work which includes removing the existing concrete that is damaged and replacing it with new pavement.

Throughout the course of this project, there could be some minimal damage done to yards and or sprinkler systems. The contractor that is on site will be responsible for replacing any damaged sprinkler lines and/or heads. They will also be replacing any sod that is torn up while on site. Once the new sod is laid, it will be the responsibility of the homeowner at each lot to water the new sod until it has re-established itself.

Before starting the work on site, each contractor must put in a call and have all the utilities in the area located. You might notice some areas in your yard that have been flagged and/or spray painted. This does not indicate the area in which they will be working. It is just to give them an idea of what kind of utilities are in the area that could possibly be hit while the contractor is on site working.

All work that is completed in public Right-of-Way and follow City of Omaha and Sarpy County specifications.

The work in your SID should not take longer than 30 days to complete. Please let me know if you have any questions or concerns on this at all.

Thank You,

A handwritten signature in black ink, appearing to read 'Nelson C Flores', written over a horizontal line.

Nelson C Flores

Construction Administration Tech.

Engineering Answers...by assisting our clients

E & A Consulting Group, Inc.

10909 Mill Valley Road, Suite 100 • Omaha, NE 68154

402.895.4700 (o)

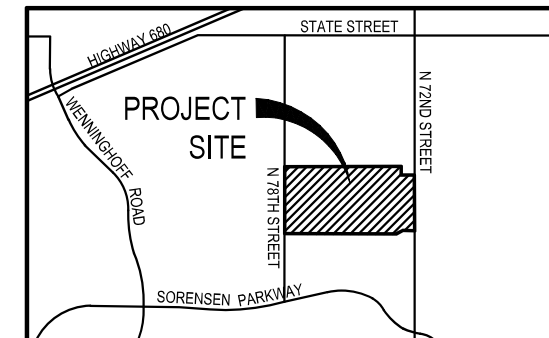
eacg.com



SPRINGBROOK

2023 STREET RECONSTRUCTION

SID NO. 504
DOUGLAS COUNTY, NEBRASKA

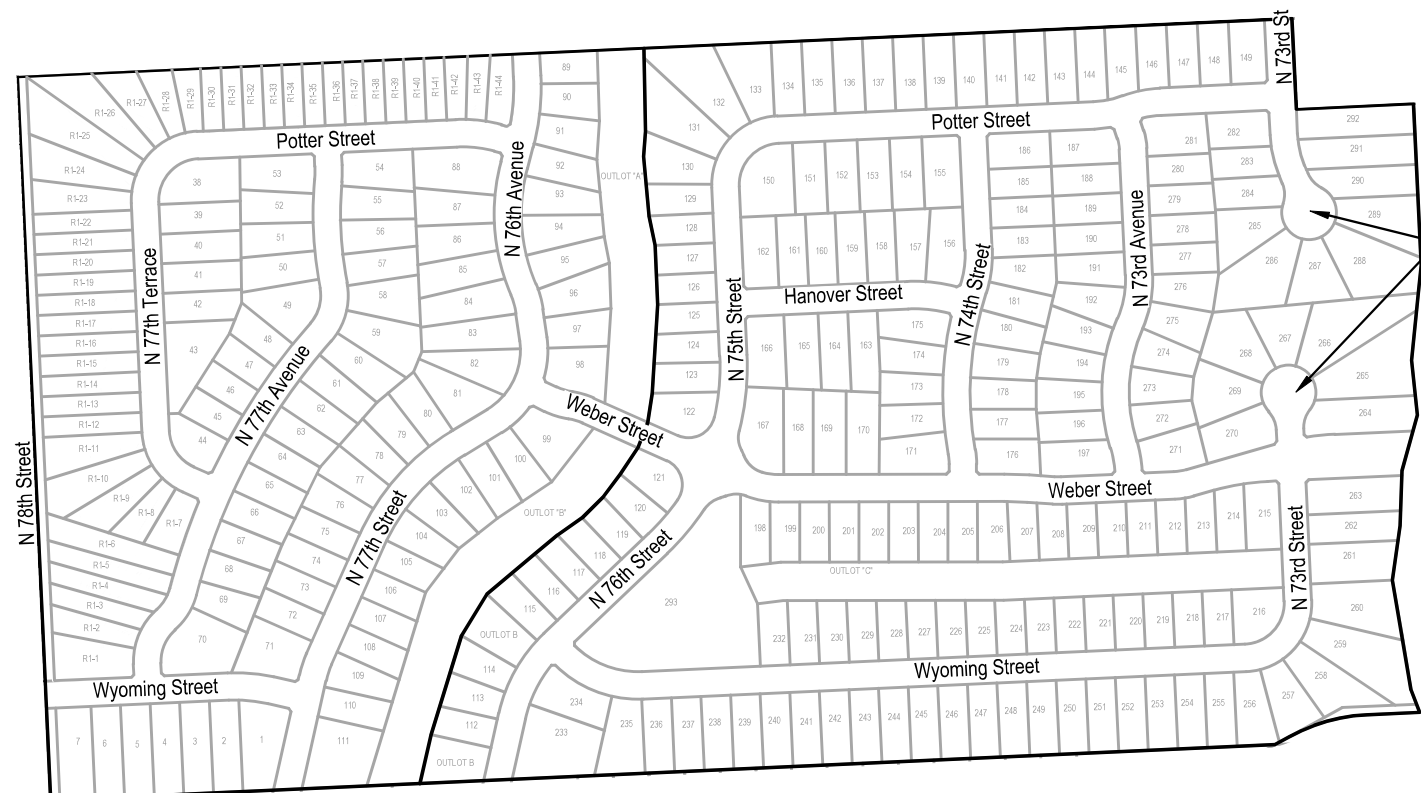


VICINITY MAP



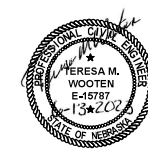
APPROXIMATE BID QUANTITIES

ITEM	DESCRIPTION	QUANTITY	UNIT
1	CONCRETE PAVEMENT REPAIR, LARGE AREA	597	SY
2	CONCRETE PAVEMENT REPAIR, SMALL AREA	781	SY
3	FULL DEPTH SAW CUT EXISTING PAVEMENT	1,666	LF
4	ADJUST MANHOLE TO GRADE	4	EA
5	ADJUST WATER VALVE TO GRADE	2	EA
6	REMOVE & REPLACE PCC SIDEWALK	96	SF
7	REMOVE & REPLACE PCC CURB RAMP	756	SF
8	CONSTRUCT DETECTABLE WARNING PANEL (8)	64	SF
9	REMOVE AND REPLACE FAULTY SUBGRADE	25	TN



INDEX OF SHEETS

SHEET NO.	DESCRIPTION
1	COVER
2	EAST
3	WEST
4	TOTAL QUANTITIES
5	COMPOSITE MAP



APPLICANT

SID # 504
Deborah Lowe, Chairman
11440 West Center Rd, Ste. C
Omaha, NE 68144
P: 402.334.0700
F: 402.334.0815
bbeller@fdjlaw.com

DESIGNER

E & A Consulting Group, Inc
Teresa Wooten, P.E.
10909 Mill Valley Road, Suite 100
Omaha, NE 68154
P: 402.895.4700
F: 402.895.3599
twooten@eacg.com

INSPECTOR

E & A Consulting Group, Inc
Randall L. Pierce, P.E.
10909 Mill Valley Road, Suite 100
Omaha, NE 68154
P: 402.895.4700
F: 402.895.3599
rpierce@eacg.com

CONTRACTOR

E & A CONSULTING GROUP, INC.
Engineering • Planning • Environmental & Field Services

10909 Mill Valley Road, Suite 100 • Omaha, NE 68154
Phone: 402.895.4700 • Fax: 402.895.3599
www.eacg.com
State of NE Certificate of Authorization #C40008

E & A CONSULTING GROUP, INC.
Engineering Answers

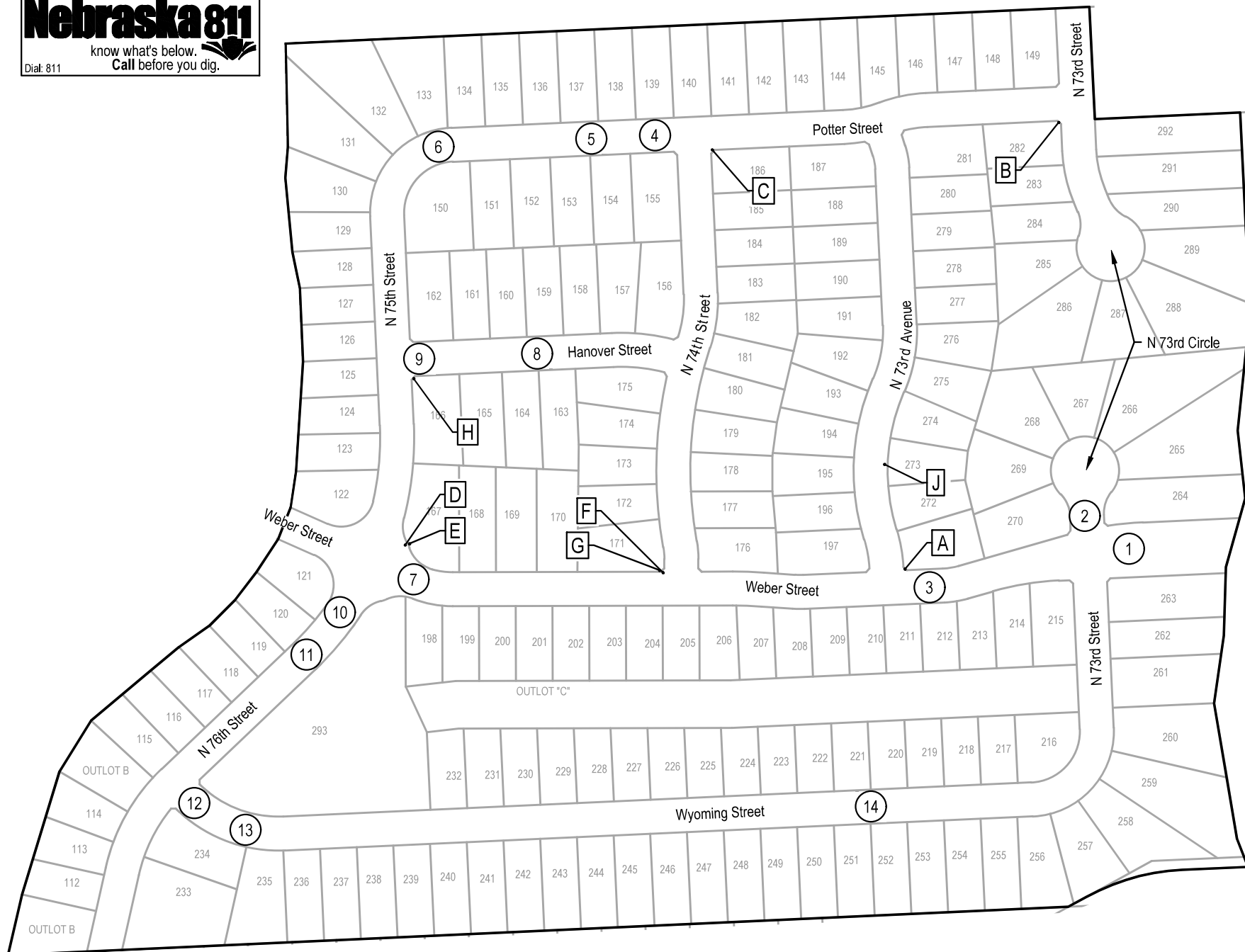
SPRINGBROOK
2023 STREET
RECONSTRUCTION
SID 504
DOUGLAS COUNTY, NEBRASKA

COVER

Proj No: P2023.18.1005
Date: 06/15/2023
Designed By: TAW
Drawn By: JME
Scale: 1" = 350'
Sheet: 1 of 5

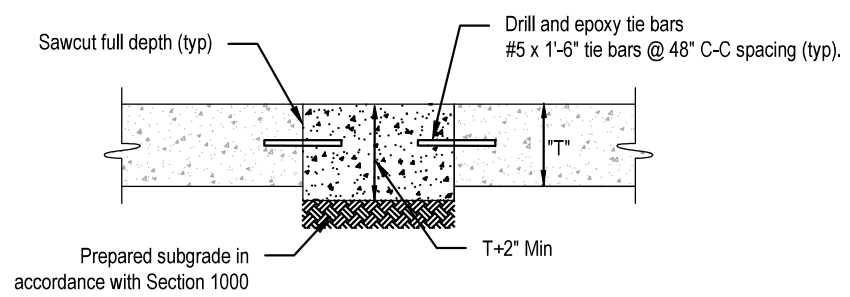
Revisions

Date	Description



2023 STREET RECONSTRUCTION									
AREA NO.	NO. POURS	SAW CUT L.F.	CURB L.F.	WIDTH	X	LENGTH	LARGE AREA EST S.Y.	SMALL AREA EST S.Y.	NOTES
1	1	54		13.0	x	14.0		20.2	
2	2	75		12.5	x	25.0		34.7	
3	1	71	45	12.8	x	45.0	63.8		
4	2	65	45	12.5	x	30.0		41.7	
5	2	80	60	25.0	x	30.0	83.3		
6	2	65	45	12.5	x	30.0	41.7		
7	1	55	30	12.5	x	30.0		41.7	
8	2	50	30	15.0	x	25.0		41.7	
9	2	65	45	9.0	x	25.0		25.0	
10	1	35	15	10.0	x	15.0		16.7	
11	2	50	30	15.0	x	25.0		41.7	
12	2	45	30	20.0	x	20.0		44.4	
13	1	40	15	12.5	x	15.0		20.8	
14	1	40	15	12.5	x	15.0		20.8	

2023 STREET RECONSTRUCTION					
AREA NO.	TYPE	APPROX. DIMEN.		EST S.F.	NOTES
A	Curb Ramp	8	x 20	160.0	ADA Plate - Cast Iron & Adjust Water Valve
B	Curb Ramp	8	x 20	160.0	(QTY 2) ADA Plate - Cast Iron
C	Curb Ramp	8	x 20	160.0	ADA Plate - Cast Iron
D	Curb Ramp	4	x 7	28.0	ADA Plate - Cast Iron
E	Sidewalk	4	x 8	32.0	
F	Curb Ramp	5	x 8	40.0	ADA Plate - Cast Iron
G	Sidewalk	4	x 8	32.0	
H	Curb Ramp	6	x 8	48.0	ADA Plate - Cast Iron
J	Sidewalk	4	x 8	32.0	Adjust Water Valve



SMALL AREA CONCRETE PAVEMENT REPAIR DETAIL
NOT TO SCALE



E & A CONSULTING GROUP, INC.
Engineering • Planning • Environmental & Field Services

E & A CONSULTING GROUP, INC.
Engineering Answers

**SPRINGBROOK
2023 STREET
RECONSTRUCTION**
SID 504
DOUGLAS COUNTY, NEBRASKA

EAST

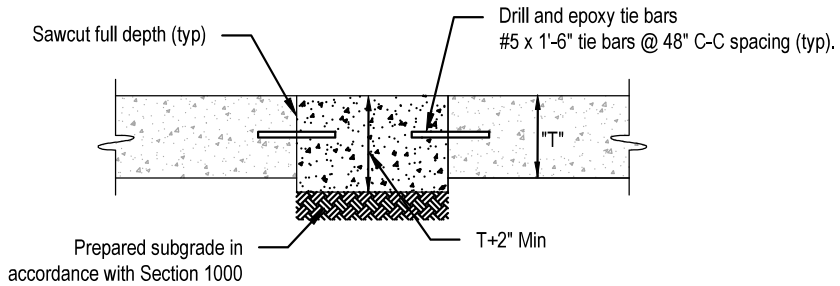
Proj No: P2023.18.1005
Date: 06/15/2023
Designed By: TMM
Drawn By: JMB
Scale: 1" = 20'
Sheet: 2 of 5

6/13/2023 2:49 PM K:\Projects\2023\18\1005\Engineering\CAD Files\Paving\Springbrook 2023 Street Reconstruction-000.dwg
Jessica Brown



2023 STREET RECONSTRUCTION									
AREA NO.	NO. POURS	SAW CUT L.F.	CURB L.F.	WIDTH	X	LENGTH	LARGE AREA EST S.Y.	SMALL AREA EST S.Y.	NOTES
15	2	50	30	15.0	x	25.0		41.7	
16	2	50	60	25.0	x	30.0	83.3		Adjust Manhole
17	1	40	30	10.0	x	20.0		22.2	Adjust Manhole
18	1	26	20	3.0	x	20.0		6.7	Curb Inlet Throat
19	1	40	15	12.5	x	15.0		20.8	
20	1	40	15	12.5	x	15.0		20.8	
21	2	50	30	15.0	x	25.0		41.7	
22	1	40	15	12.5	x	15.0		20.8	
23	1	40	15	12.5	x	15.0		20.8	
24	1	55	30	12.5	x	30.0		41.7	
25	1	45	20	12.5	x	20.0		27.8	
26	2	65	45	12.5	x	15.0	20.8		Adjust Manhole
				12.5	x	30.0	41.7		
27	1	55	30	12.5	x	30.0		41.7	
28	1	40	15	12.5	x	15.0		20.8	
29	2	50	60	25.0	x	30.0	83.3		
30	2	50	30	15.0	x	25.0		41.7	
31	2	50	30	15.0	x	25.0		41.7	
32	2	90	10	35.0	x	30.0	116.7		

2023 STREET RECONSTRUCTION					
AREA NO.	TYPE	APPROX. DIMEN.		EST S.F.	NOTES
I	Curb Ramp	8	x 20	160.0	ADA Plate - Cast Iron & Adjust Manhole



SMALL AREA CONCRETE PAVEMENT REPAIR DETAIL
NOT TO SCALE



E & A CONSULTING GROUP, INC.
Engineering • Planning • Environmental & Field Services
10809 Mill Valley Road, Suite 100 • Omaha, NE 68154
Phone: 402.265.4700 • Fax: 402.265.3599
www.eandagroup.com
State of NE Certificate of Authorization #CA0008



SPRINGBROOK
2023 STREET
RECONSTRUCTION
SID 504
DOUGLAS COUNTY, NEBRASKA

WEST

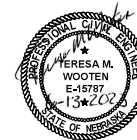
Revisions	Date	Description
1	06/15/2023	TAM
2		JME


Proj No: P2023.18.1005
Date: 06/15/2023
Designed By: TAM
Drawn By: JME
Scale: 1" = 20'
Sheet: 3 of 4

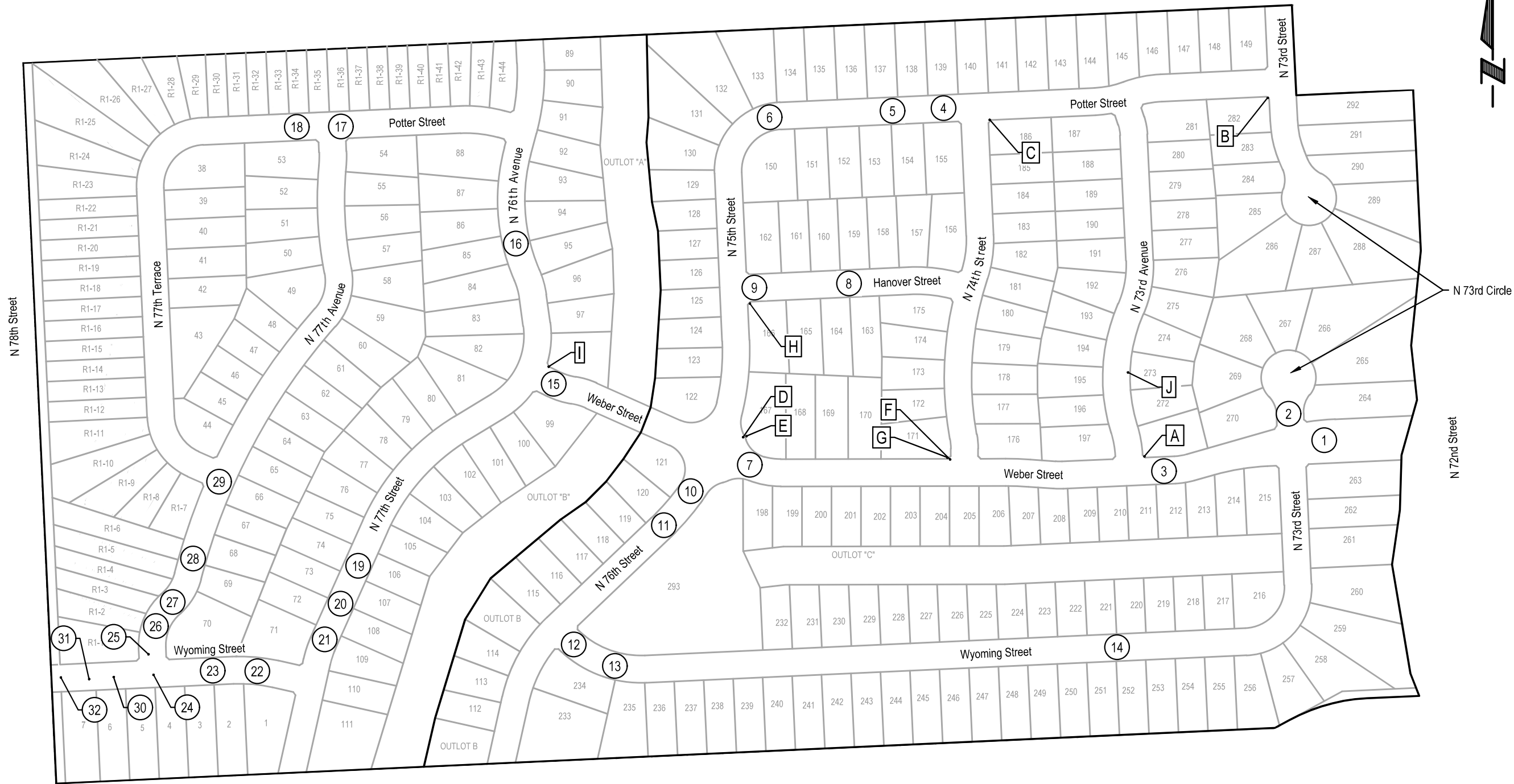


2023 STREET RECONSTRUCTION									
AREA NO.	NO. POURS	SAW CUT L.F.	CURB L.F.	WIDTH	X	LENGTH	LARGE AREA EST S.Y.	SMALL AREA EST S.Y	NOTES
1	1	54		13.0	x	14.0		20.2	
2	2	75		12.5	x	25.0		34.7	
3	1	71	45	12.8	x	45.0	63.8		
4	2	65	45	12.5	x	30.0		41.7	
5	2	80	60	25.0	x	30.0	83.3		
				12.5	x	30.0	41.7		
6	2	65	45	12.5	x	30.0	41.7		
				12.5	x	15.0	20.8		
7	1	55	30	12.5	x	30.0		41.7	
8	2	50	30	15.0	x	25.0		41.7	
9	2	65	45	9.0	x	25.0		25.0	
				12.5	x	15.0		20.8	
10	1	35	15	10.0	x	15.0		16.7	
11	2	50	30	15.0	x	25.0		41.7	
12	2	45	30	20.0	x	20.0		44.4	
13	1	40	15	12.5	x	15.0		20.8	
14	1	40	15	12.5	x	15.0		20.8	
15	2	50	30	15.0	x	25.0		41.7	
16	2	50	60	25.0	x	30.0	83.3		Adjust Manhole
17	1	40	30	10.0	x	20.0		22.2	Adjust Manhole
18	1	26	20	3.0	x	20.0		6.7	Curb Inlet Throat
19	1	40	15	12.5	x	15.0		20.8	
20	1	40	15	12.5	x	15.0		20.8	
21	2	50	30	15.0	x	25.0		41.7	
22	1	40	15	12.5	x	15.0		20.8	
23	1	40	15	12.5	x	15.0		20.8	
24	1	55	30	12.5	x	30.0		41.7	
25	1	45	20	12.5	x	20.0		27.8	
26	2	65	45	12.5	x	15.0	20.8		Adjust Manhole
				12.5	x	30.0	41.7		
27	1	55	30	12.5	x	30.0		41.7	
28	1	40	15	12.5	x	15.0		20.8	
29	2	50	60	25.0	x	30.0	83.3		
30	2	50	30	15.0	x	25.0		41.7	
31	2	50	30	15.0	x	25.0		41.7	
32	2	90	10	35.0	x	30.0	116.7		

2023 STREET RECONSTRUCTION						
AREA NO.	TYPE	APPROX. DIMEN.			EST S.F.	NOTES
A	Curb Ramp	8	x	20	160.0	ADA Plate - Cast Iron & Adjust Water Valve
B	Curb Ramp	8	x	20	160.0	(QTY 2) ADA Plate - Cast Iron
C	Curb Ramp	8	x	20	160.0	ADA Plate - Cast Iron
D	Curb Ramp	4	x	7	28.0	ADA Plate - Cast Iron
E	Sidewalk	4	x	8	32.0	
F	Curb Ramp	5	x	8	40.0	ADA Plate - Cast Iron
G	Sidewalk	4	x	8	32.0	
H	Curb Ramp	6	x	8	48.0	ADA Plate - Cast Iron
I	Curb Ramp	8	x	20	160.0	ADA Plate - Cast Iron & Adjust Manhole
J	Sidewalk	4	x	8	32.0	Adjust Water Valve



Proj No: P2003181005 Date: 06/15/2023 Designed By: TMM Drawn By: JMB Scale: N/A Sheet: 4 of 5	TOTAL QUANTITIES	SPRINGBROOK 2023 STREET RECONSTRUCTION <small>SID 504 DOUGLAS COUNTY, NEBRASKA</small>	 E & A CONSULTING GROUP, INC. <small>Engineering Answers</small>	E & A CONSULTING GROUP, INC. <small>Engineering • Planning • Environmental & Field Services</small> <small>10809 Mill Valley Road, Suite 100 • Omaha, NE 68154 Phone: 402.255.4700 • Fax: 402.955.3599 www.eacg.com State of NE Certificate of Authorization #C40008</small>
--	-------------------------	--	--	---



Revisions	Date	Description
1	06/13/2023	TAM
2		JMB

Proj No: P2023.18.1005
 Date: 06/13/2023
 Designed By: TAM
 Drawn By: JMB
 Scale: 1" = 200'
 Sheet: 5 of 5